

SHOPPES ON FRANKLIN

64-68 & 84 FRANKLIN STREET • WESTERLY, RHODE ISLAND



LOCATION

Close proximity to I-95, the Connecticut-Rhode Island state line, Westerly State Airport and on route to the exclusive Watch Hill and southern coastline beaches

SPACE

Currently under development for up to 53,000± SF (subdividable or build to suit) plus an out parcel up to 3,800± SF

NEARBY

JCPenney, TJ Maxx, Stop & Shop, Michaels, and Home Depot

LOCATION & DEMOGRAPHICS

LAT/LON	GLA	PARKING	
41.36343/-71.81302	57,925 SF	316	
TRAFFIC COUNT	CARS/DAY		
Franklin Street (Rt. 1)	22,000		
2023 DEMOGRAPHICS	1-MILE	3-MILE	5-MILE
Estimated Population	4,797	27,942	36,845
Estimated Average HH Income	\$142,021	\$128,739	\$129,088

SITE PLAN



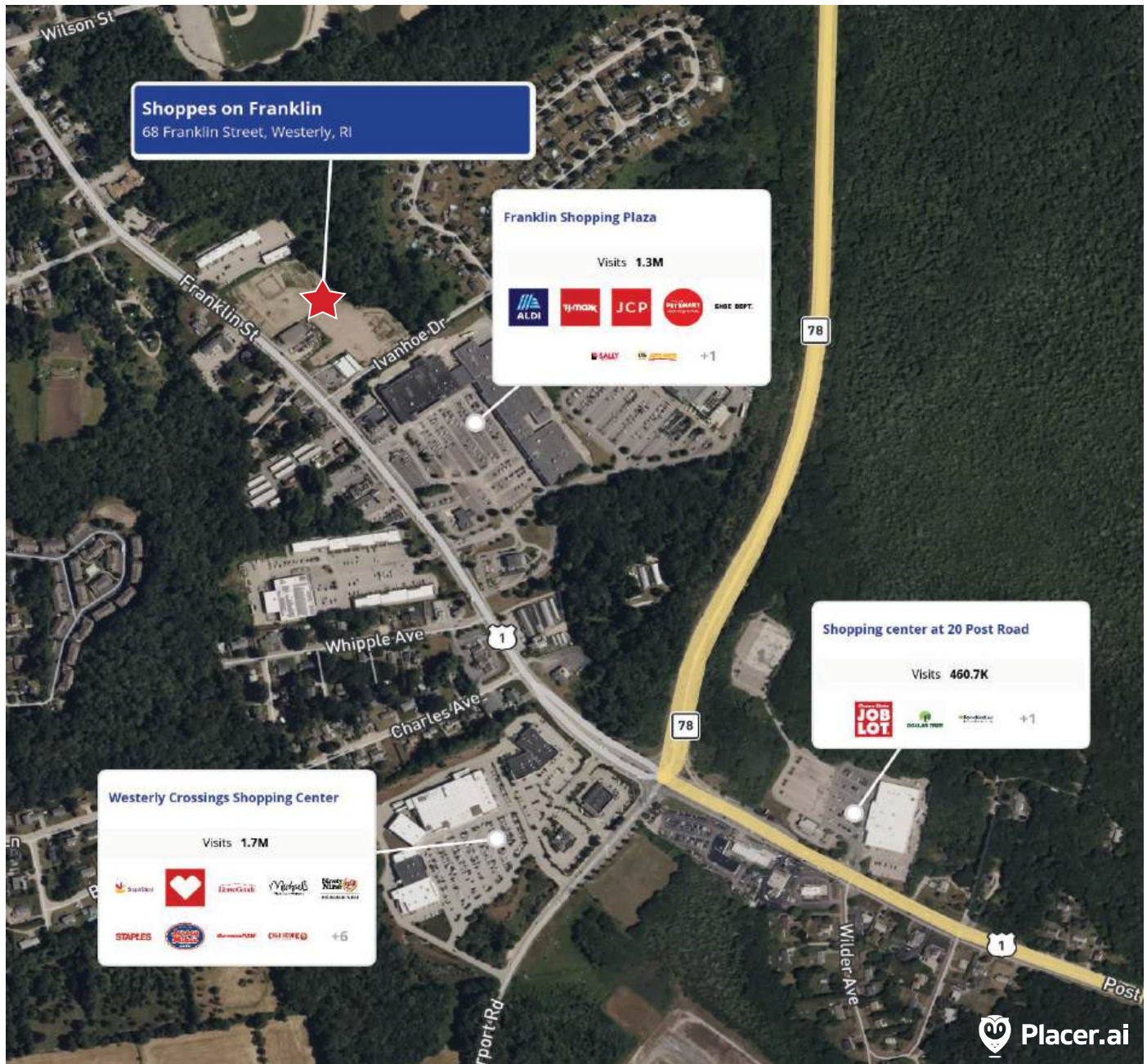
AVAILABLE SPACE		
	SQUARE FEET	WIDTH x LENGTH
RETAIL A (SUBDIVIDABLE)	31,416 SF	357' x 88'
RETAIL B	7,225 SF	85' x 85'
RETAIL C	7,225 SF	85' x 85'

AVAILABLE - FUTURE DEVELOPMENT



1414 Atwood Avenue • Johnston, RI • 02919 • 401.273.6800 • www.CarpionatoGroup.com

TRADE MAP



FOR MORE INFORMATION, CONTACT:

Peter Flynn • 401.273.6800 x141 • PFlynn@CarpionatoGroup.com

Joe Pierik • 401.273.6800 x126 • JPierik@CarpionatoGroup.com