

# REIMAGINED

# 100 SOCKANOSSET

---

CRANSTON | RHODE ISLAND

























 GLA 530,000 square feet  
 Key Tenants Whole Foods, lululemon, L.L Bean, Pottery Barn, Sephors, Williams-Sonoma, Gap brands, Container Store, LA Fitness

sockanosset cross road ATC 13,374


**SITE**

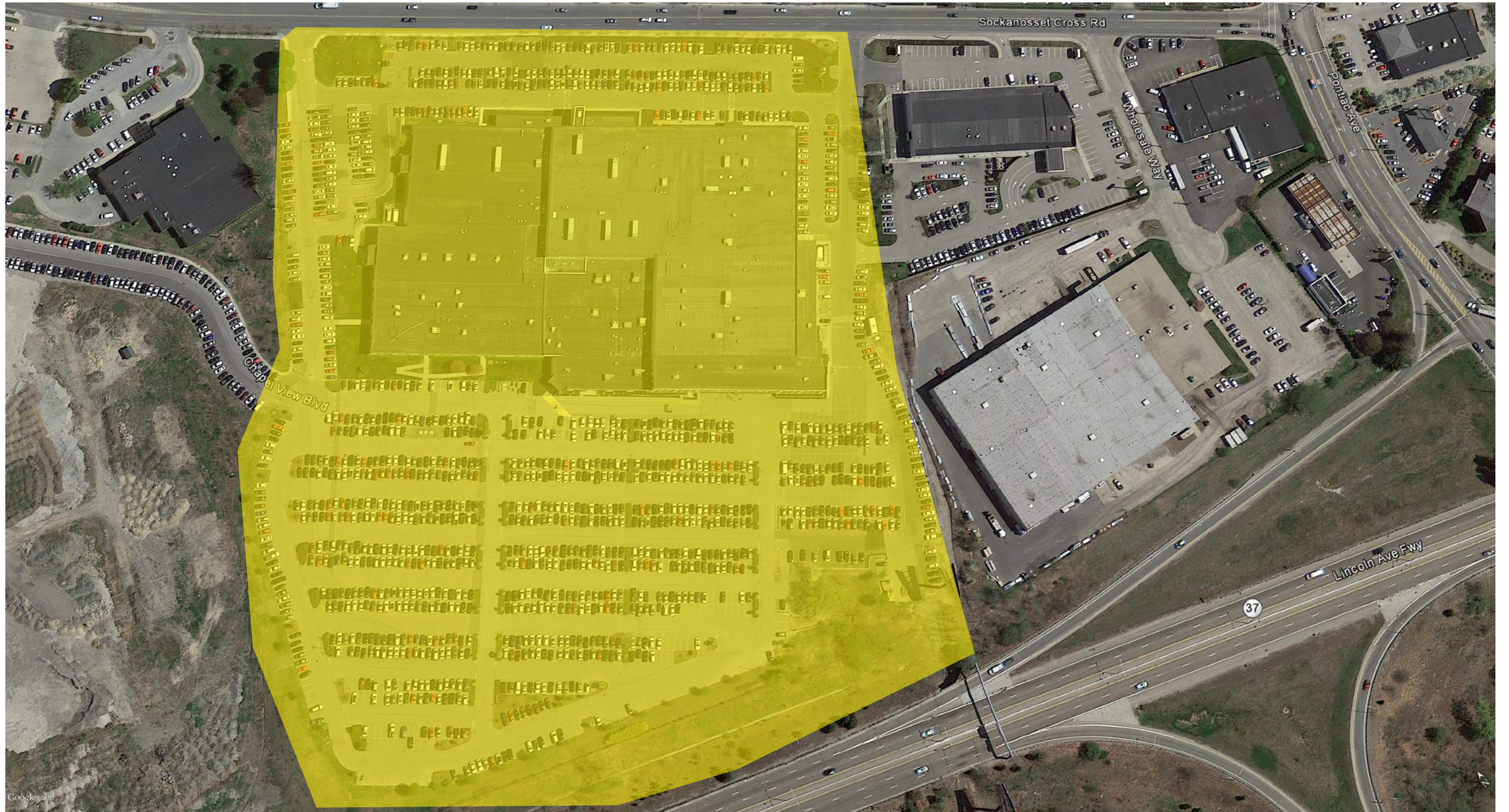


pontiac avenue ATC 20,470

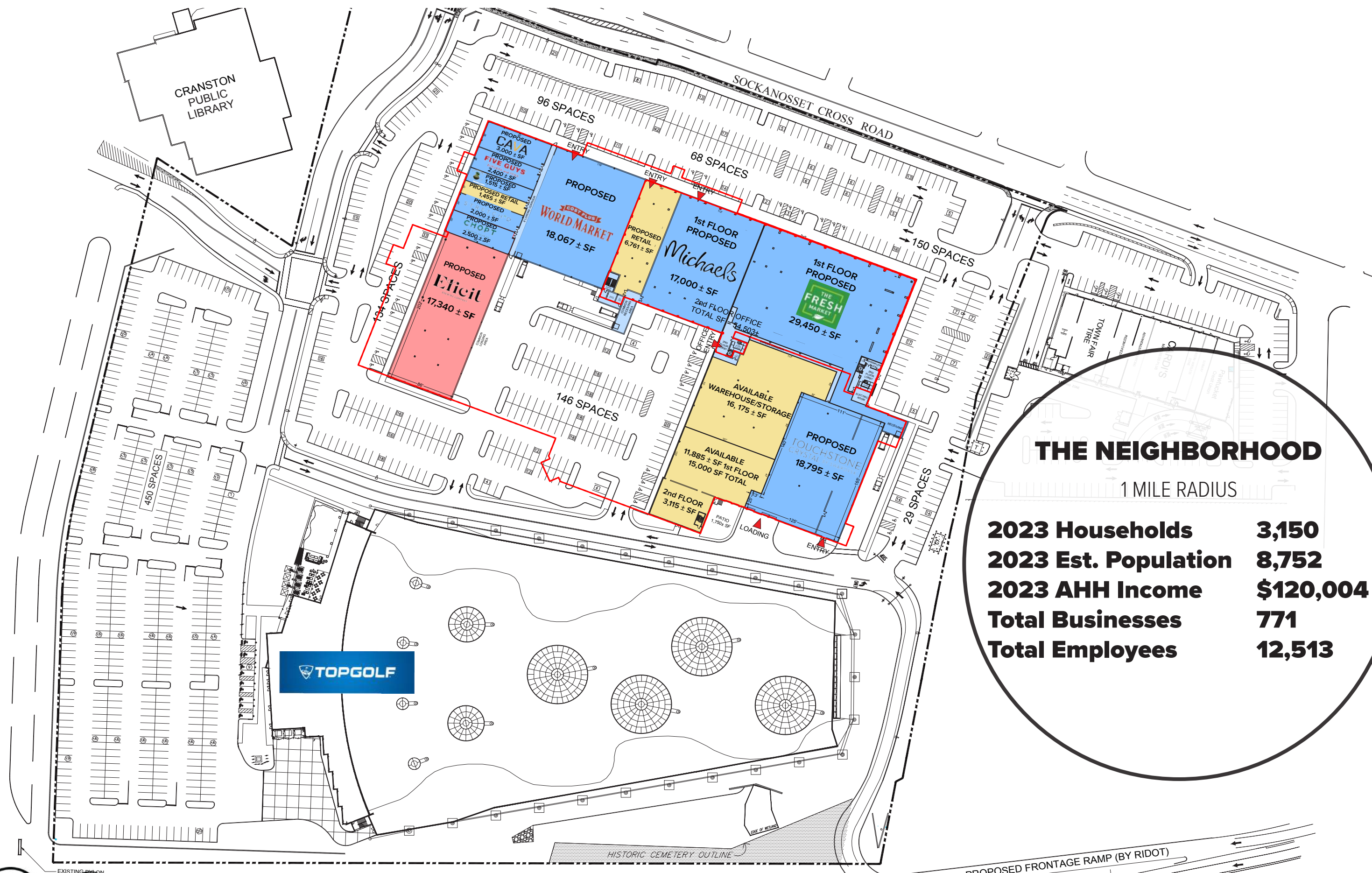
RT 5 - new london avenue ATC 29,617

RT 37 ATC 34,168


 GLA 432,305 square feet  
 Key Retail Tenants REI, Shaw's, TJMaxx, Petco, Staples, Panera Bread, Paul Mitchell School, Message Envy, Pure Barre, Orange Theory, Ideal Image

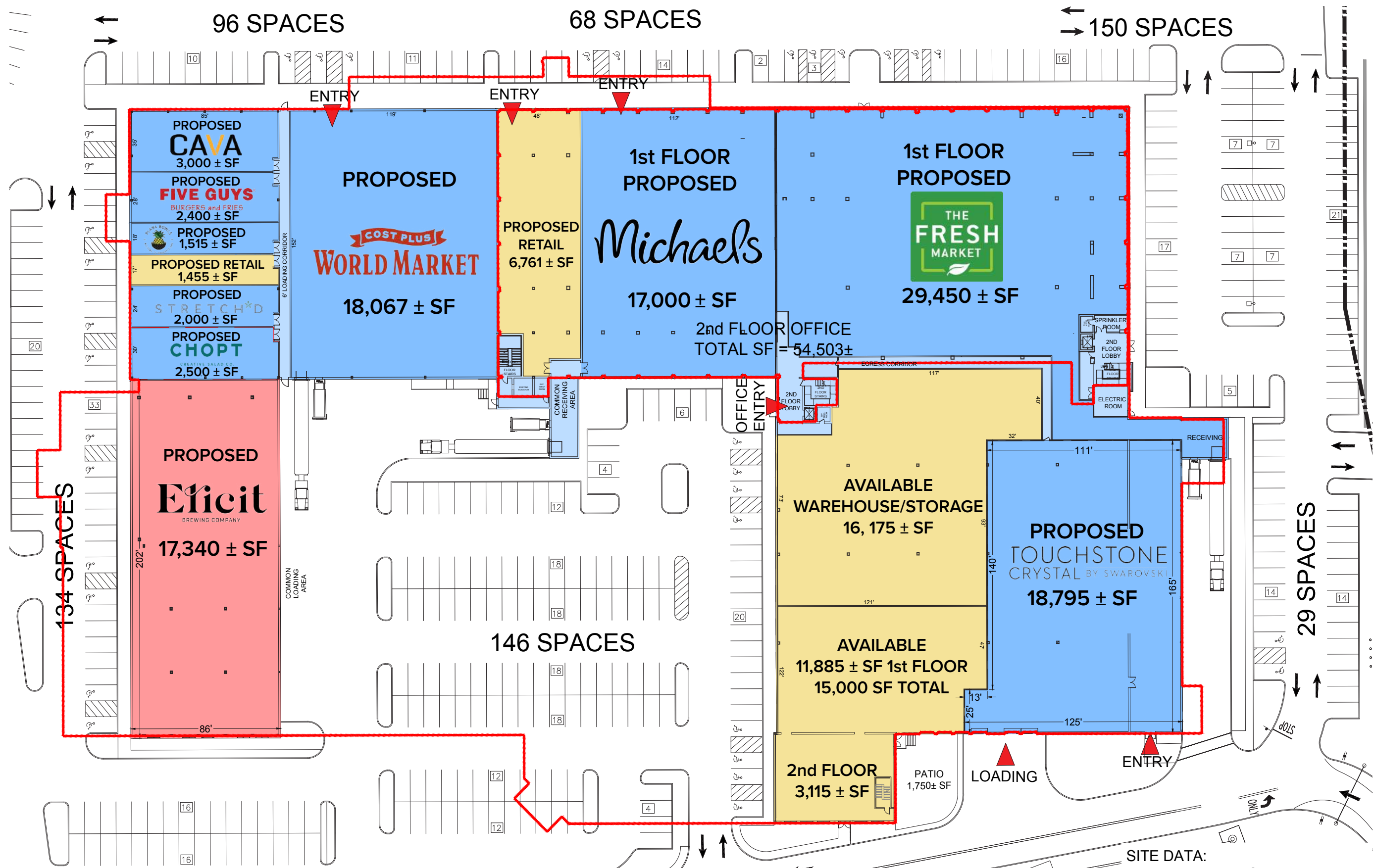






**THE NEIGHBORHOOD**  
1 MILE RADIUS

<b>2023 Households</b>	<b>3,150</b>
<b>2023 Est. Population</b>	<b>8,752</b>
<b>2023 AHH Income</b>	<b>\$120,004</b>
<b>Total Businesses</b>	<b>771</b>
<b>Total Employees</b>	<b>12,513</b>



SITE DATA:  
 RETAIL - 92,073± SF  
 RESTAURANT - 24,415± SF  
 OFFICE - 54,503 ± SF  
 WAREHOUSE / STORAGE - 16,175±  
 MANUFACTURING - 18,795± SF  
 TOTAL SF = 205,961



# SITE PLAN

# LEASING TEAM



PETER FLYNN

[PFLYNN@CARPIONATOGROUP.COM](mailto:PFLYNN@CARPIONATOGROUP.COM)



DOMENIC CARPIONATO

[DCARPIONATO@CARPIONATOGROUP.COM](mailto:DCARPIONATO@CARPIONATOGROUP.COM)



JOE PIERIK

[JPIERIK@CARPIONATOGROUP.COM](mailto:JPIERIK@CARPIONATOGROUP.COM)

