

# 5600 POST ROAD

EAST GREENWICH, RHODE ISLAND

## EXISTING STOREFRONTS



### FOR MORE INFORMATION, CONTACT:

Peter Flynn • 401.273.6800 x141 • PFlynn@CarpionatoGroup.com

Joe Pierik • 401.273.6800 x126 • JPierik@CarpionatoGroup.com

# 5600 POST ROAD

EAST GREENWICH, RHODE ISLAND



## LOCATION

Positioned within the affluent town of East Greenwich with very strong demographics. Estimated Household Incomes of \$138,515 within a 3-mile radius

## SPACE

76,292 ± SF

## NEARBY

Stop and Shop, Planet Fitness, Job Lot, Ace Hardware, Marshalls, Citizen's Bank, GNC, Riverhead Building Supply



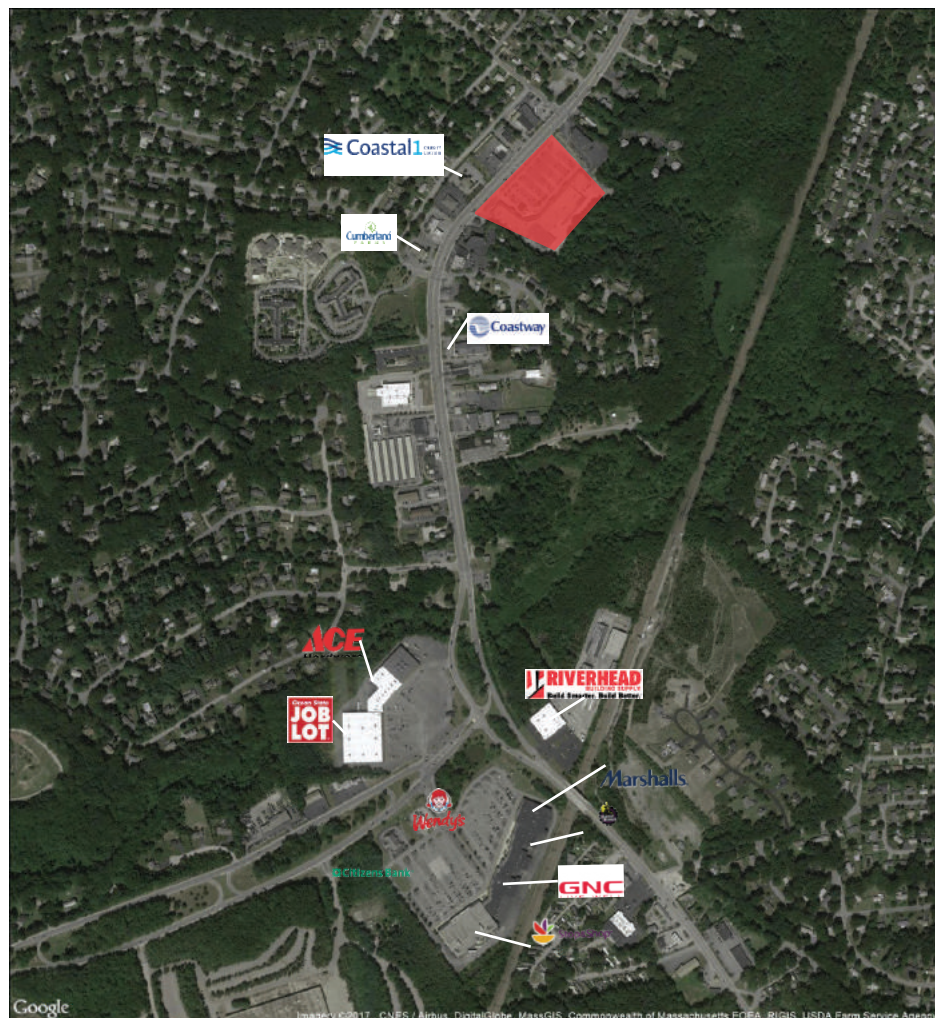
# 5600 POST ROAD

EAST GREENWICH, RHODE ISLAND

## LOCATION & DEMOGRAPHICS

LAT/LON	GLA	PARKING	
41.6413/-71.4664	76,292 SF	431	
TRAFFIC COUNT	CARS/DAY		
Post Road	21,000		
Route 4	79,000		
DEMOGRAPHICS 2022	1-MILE	3-MILE	5-MILE
Estimated Population	5,260	28,621	77,797
Estimated Average HH Income	\$125,426	\$126,259	\$108,582

## TRADE MAP



## TENANTS

	SQUARE FEET			SQUARE FEET
Available Retail A*	25,906 SF	181' x 140'	Siena	4,820 SF
Available Retail B	1,643 SF	20' x 82'-6"	Teddy Bearskins	2,948 SF
Available Retail C	2,914 SF	39'-9" x 72'-7"	T's Cafe	3,800 SF
Fred Astaire	3,058 SF		Taste Buds Kitchen	1,985 SF
Clayground	1,940 SF		UPS Store	2,908 SF
Ferocious Eyes	2,040 SF		Ivory: A Bridal Boutique	2,740 SF
H&R Block	1,600 SF		Skein Yarn Shop	1,340 SF
Renegade Fitness	15,000 SF		MLP Beauty	1,650 SF

\*Sub-dividable

■ SIGNED TENANT 
 ■ AVAILABLE SPACE 
 ■ PROPOSED

## FOR MORE INFORMATION, CONTACT:

Peter Flynn • 401.273.6800 x141 • PFlynn@CarpionatoGroup.com

Joe Pierik • 401.273.6800 x126 • JPierik@CarpionatoGroup.com

1414 Atwood Avenue • Johnston, RI • 02919 • 401.273.6800 • [www.CarpionatoGroup.com](http://www.CarpionatoGroup.com)