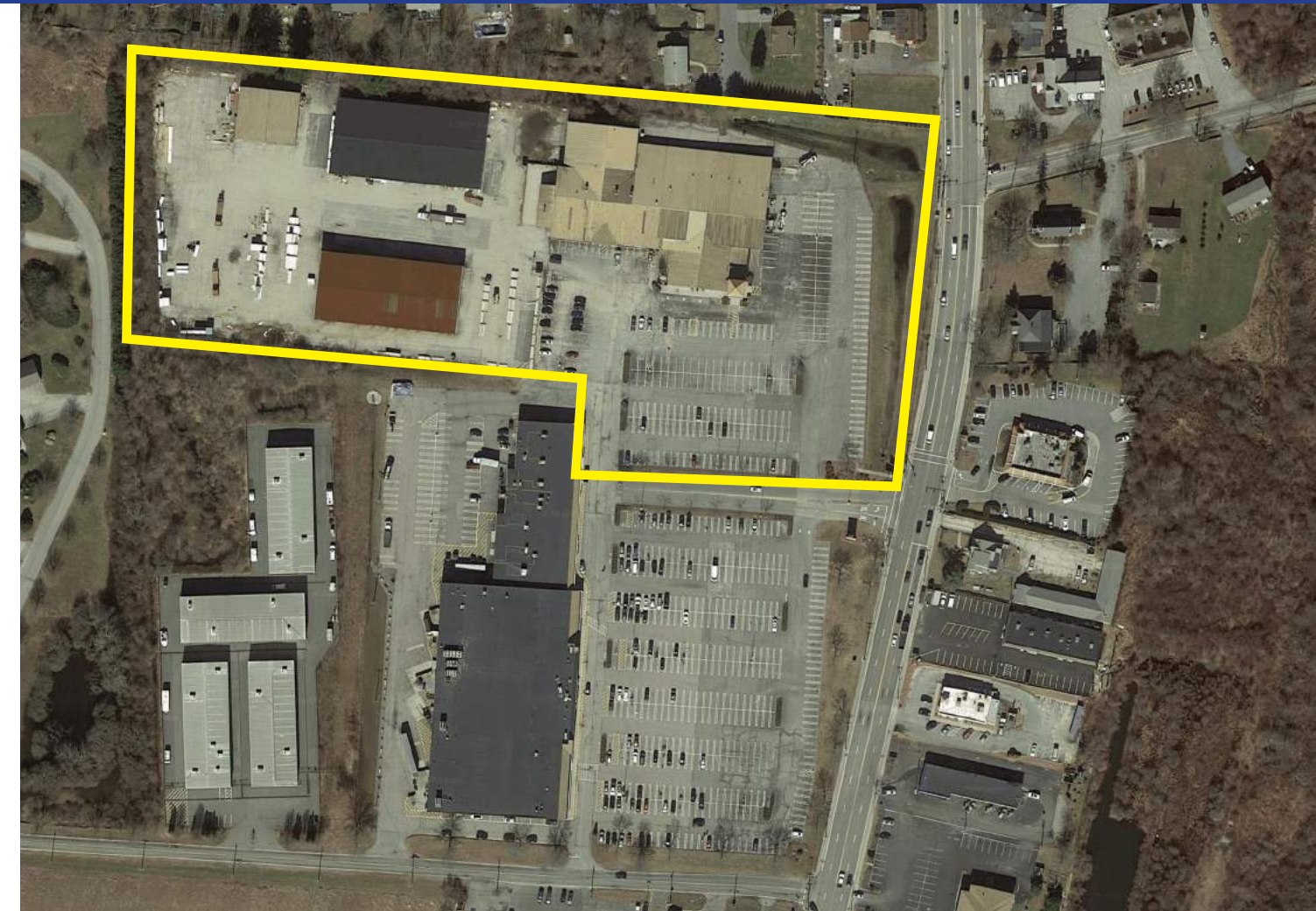
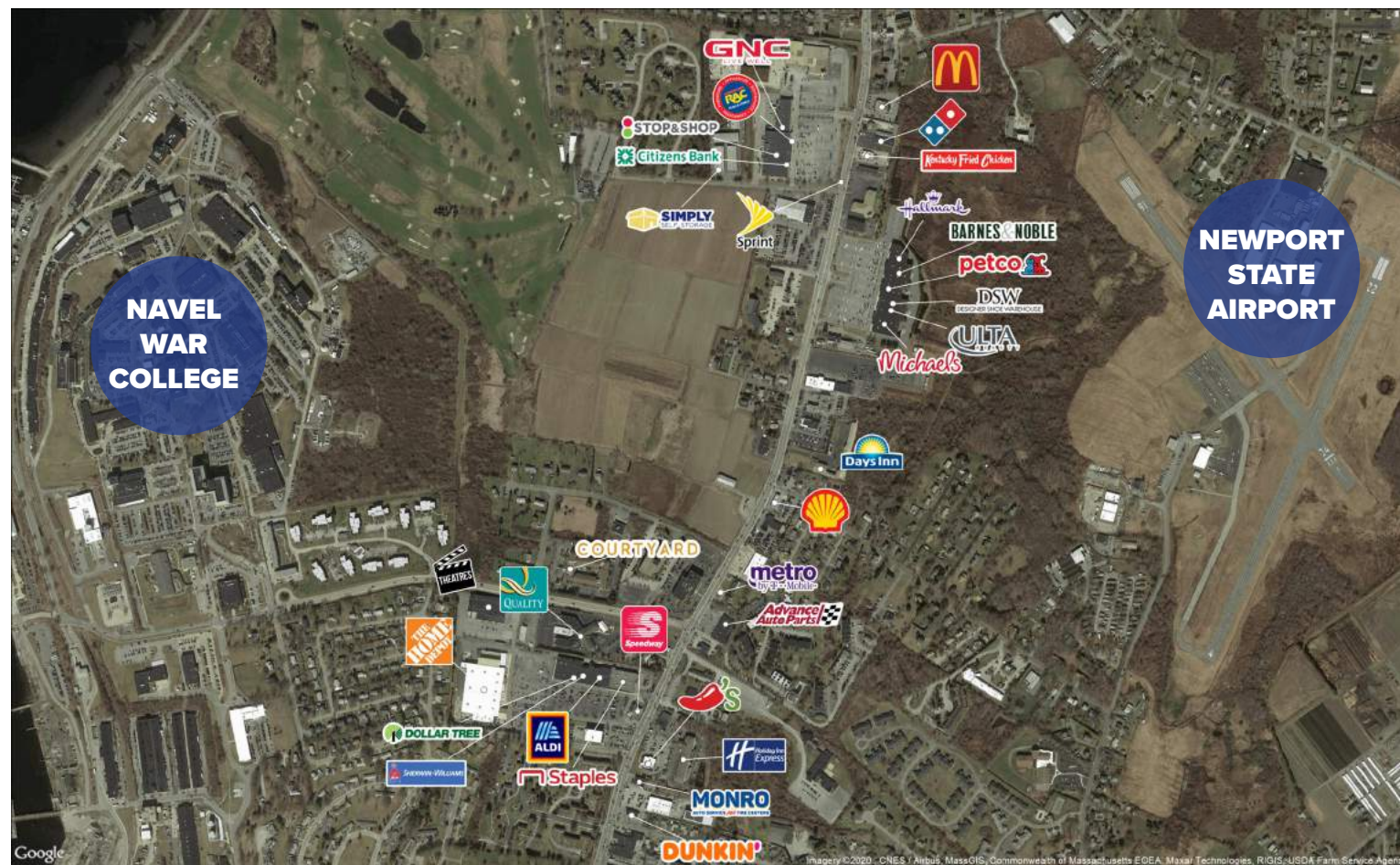


1400 WEST MAIN ROAD

MIDDLETOWN, RHODE ISLAND

TRADE MAP



LOCATION

With close proximity to historic Newport, this location offers great frontage to a heavy traveled main street.

SPACE

89,611 SF

NEARBY

Stop & Shop, CVS Pharmacy, Sprint, Rent-a-Center, Dunkin Donuts, Shaws, Chipotle, Rite Aid, Riverhead Building Supply

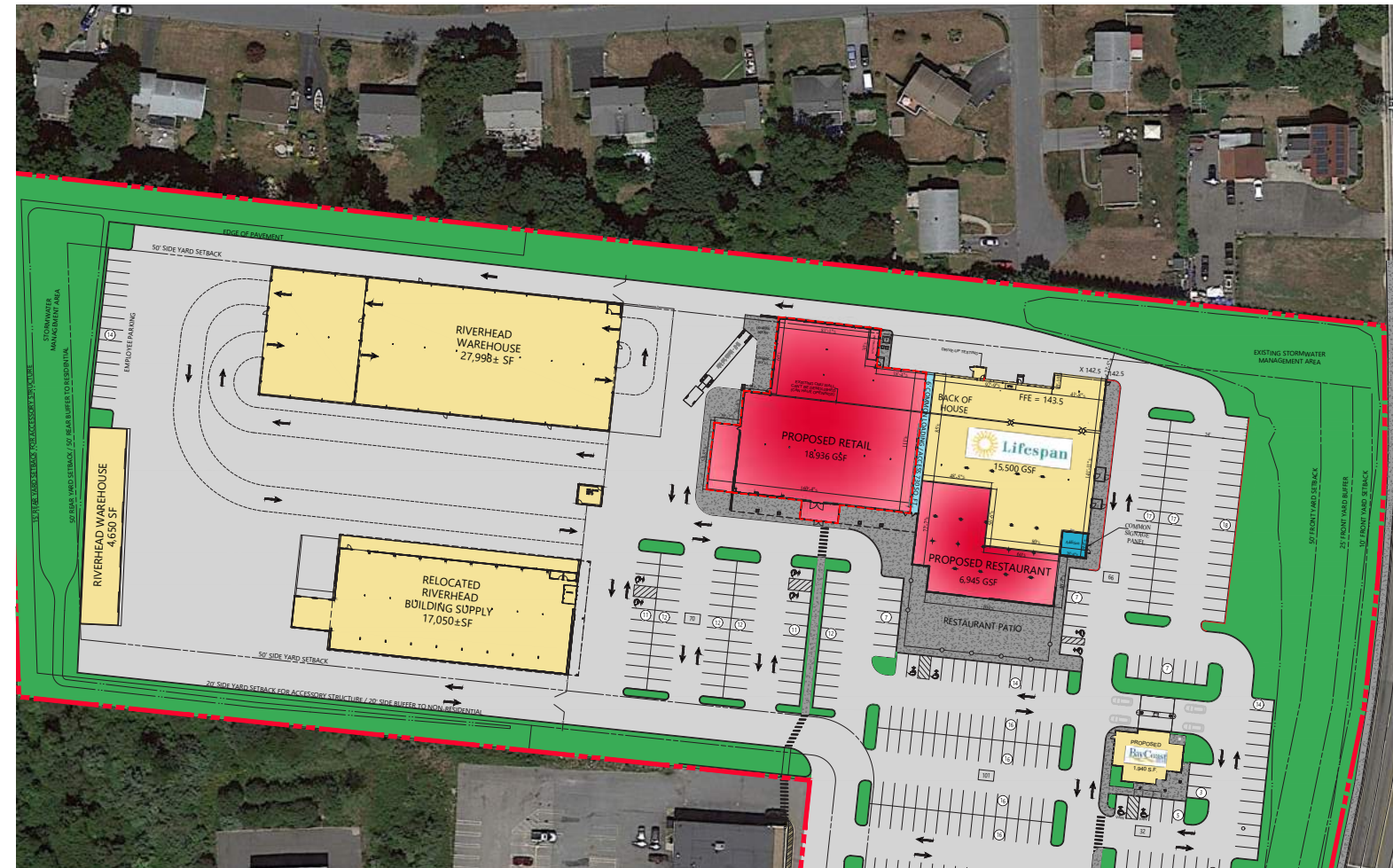


1400 WEST MAIN ROAD

MIDDLETOWN, RHODE ISLAND

LOCATION & DEMOGRAPHICS

LAT/LON	GLA	PARKING	
41.5388/-71.2931	89,931 SF	338	
TRAFFIC COUNT		CARS/DAY	
West Main Road		22,000	
	1-MILE	3-MILE	5-MILE
Estimated Population (2022)	5,285	30,133	55,503
Estimated Average HH Income (2022)	\$103,641	\$96,285	\$114,391



TENANTS		
	SQUARE FEET	WIDTH X LENGTH
RIVERHEAD BUILDING SUPPLY	43,695 SF	
LIFESPAN	15,500 SF	
BAYCOAST BANK	1,940 SF	
PROPOSED TENANT	6,945 SF	
PROPOSED TENANT	18,936 SF	101' x 170'

AVAILABLE
 SIGNED TENANT
 PROPOSED

FOR MORE INFORMATION, CONTACT:

Peter Flynn • 401.273.6800 x141 • PFlynn@CarpionatoGroup.com
 Joe Pierik • 401.273.6800 x126 • JPierik@CarpionatoGroup.com