

# 179 COURT STREET

PLYMOUTH, MASSACHUSETTS



## LOCATION

Positioned within the affluent Plymouth community this sites has strong demographics with an average household income of \$131,000 within a 5 mile radius.

## SPACE

70,333 SF

## NEARBY

Parks and historic landmarks including the well visited Plymouth Plantation and other attractions with the cultural district of Plymouth.

TENANTS		
	SQUARE FEET	WIDTH X LENGTH
RETAIL A	30,296 SF	197' x 146'
RETAIL B	6,717 SF	79' x 106'
RETAIL C	1,360 SF	16' x 106'
RETAIL D	8,000 SF	57' x 140'
RETAIL E	3,100 SF	37' x 103'
RETAIL F	3,000 SF	58' x 40'
Fashion Nails	1,660 SF	
Dance Factory	7,800 SF	
Pioppi's Package Store	8,400 SF	

AVAILABLE

SIGNED TENANTS

# 179 COURT STREET

PLYMOUTH, MASSACHUSETTS

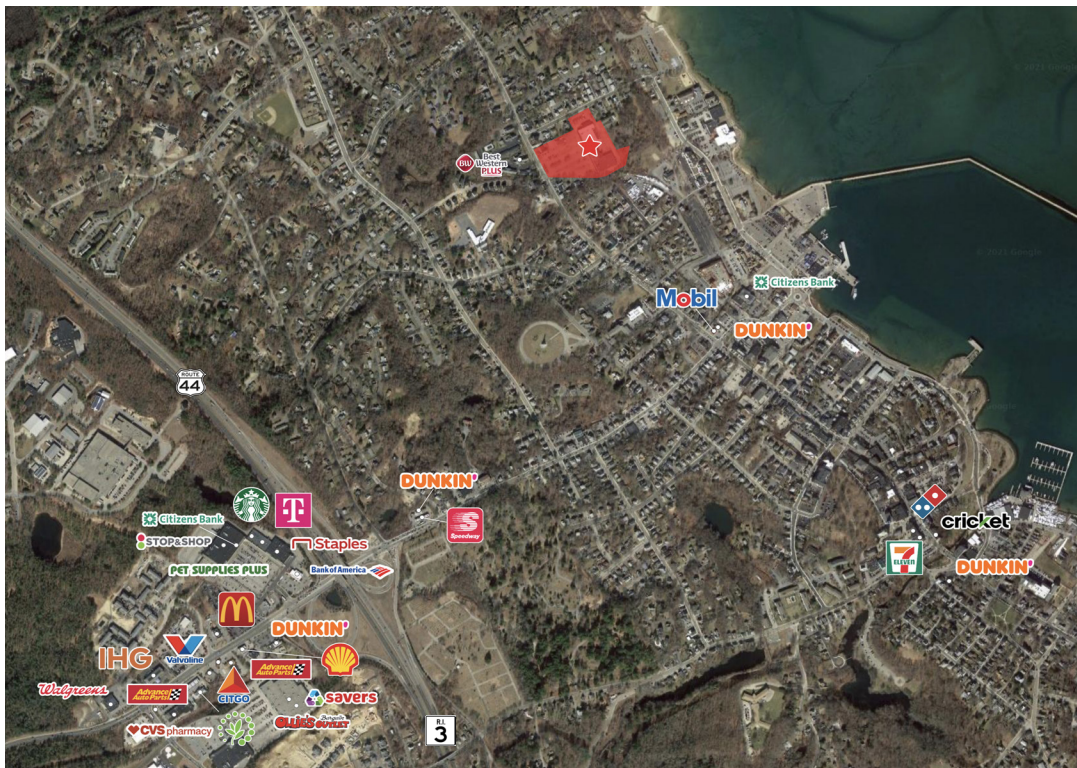
## LOCATION & DEMOGRAPHICS

LAT/LON	GLA	PARKING
41.9651/-70.6744	70,333± SF	266

TRAFFIC COUNT	CARS/DAY
Court Street	15,000

	1-MILE	3-MILE	5-MILE
Estimated Population (2022)	6,660	24,345	45,473
Estimated Average HH Income (2022)	\$79,559	\$105,345	\$129,845

## TRADE MAP



## FOR MORE INFORMATION, CONTACT:

Peter Flynn • 401.273.6800 x141 • PFlynn@CarpionatoGroup.com

Joe Pierik • 401.273.6800 x126 • JPierik@CarpionatoGroup.com