

# 148 ATWOOD AVENUE

CRANSTON, RHODE ISLAND



## LOCATION

Located on Atwood Ave with a strong traffic count of 22,000, near-by I-295

## SPACE

35,140 SF

## NEARBY

Stop & Shop, Citizens Bank, CVS Pharmacy, Dunkin Donuts, Bank of America, Santander, TD Bank

TENANTS		
	SQUARE FEET	WIDTH X LENGTH
Available Retail 2021	1,660 SF	43' x 40'
UPS	2,671 SF	60' x 45'
Ocean State Job Lot	32,469 SF	

SIGNED  AVAILABLE

# 148 ATWOOD AVENUE

CRANSTON, RHODE ISLAND

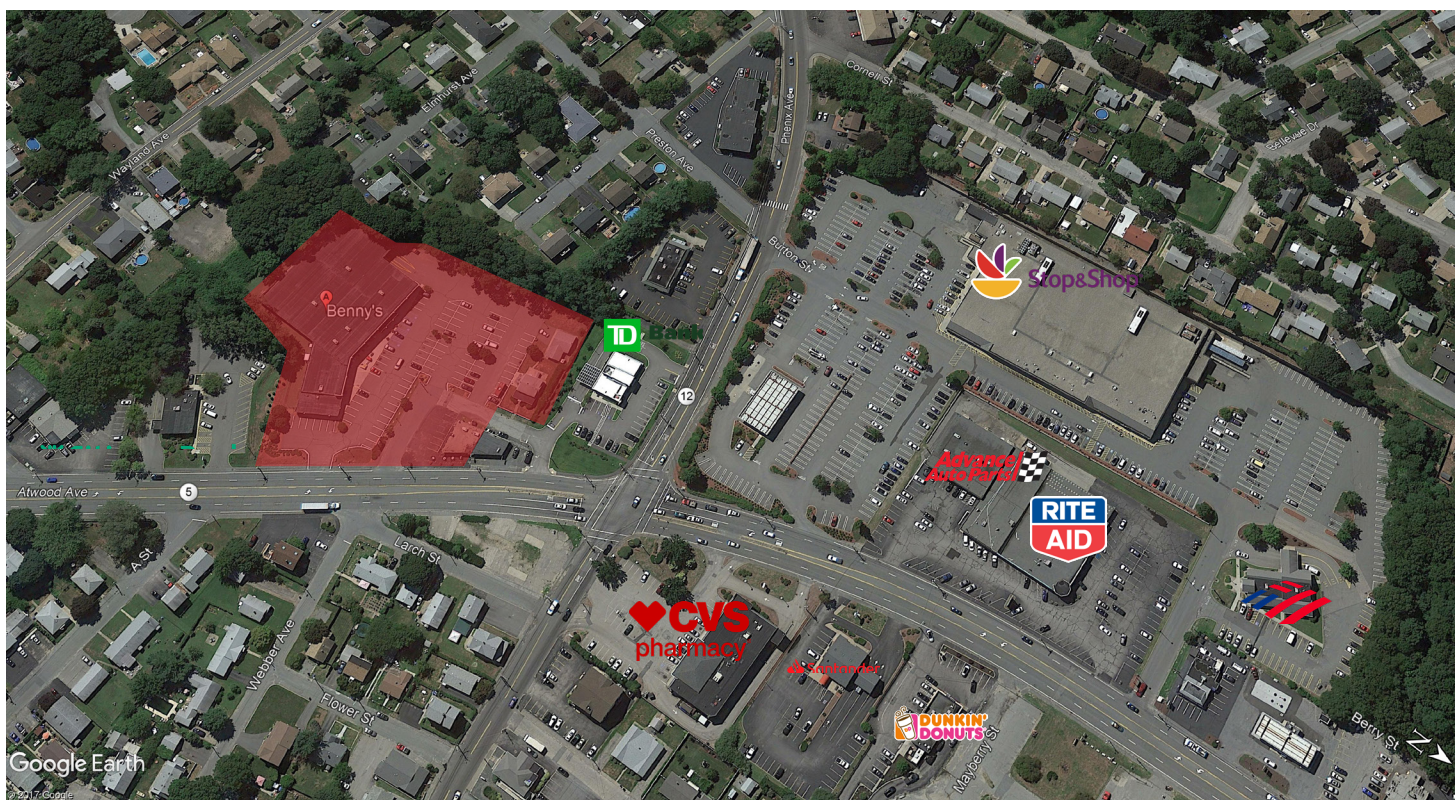
## LOCATION & DEMOGRAPHICS

LAT/LON	GLA	PARKING
41.7796/-71.4721	35,140 SF	118

TRAFFIC COUNT	CARS/DAY
Atwood Avenue	22,000

	1-MILE	3-MILE	5-MILE
Estimated Population (2022)	12,479	117,911	298,010
Estimated Average HH Income (2022)	\$80,300	\$78,127	\$77,067

## TRADE MAP



### FOR MORE INFORMATION, CONTACT:

Peter Flynn • 401.273.6800 x141 • PFlynn@CarpionatoGroup.com

Joe Pierik • 401.273.6800 x126 • JPierik@CarpionatoGroup.com